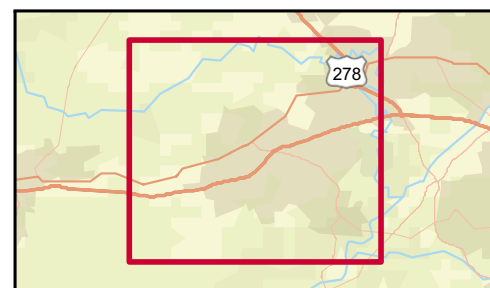
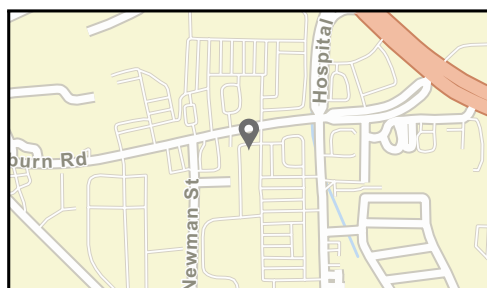
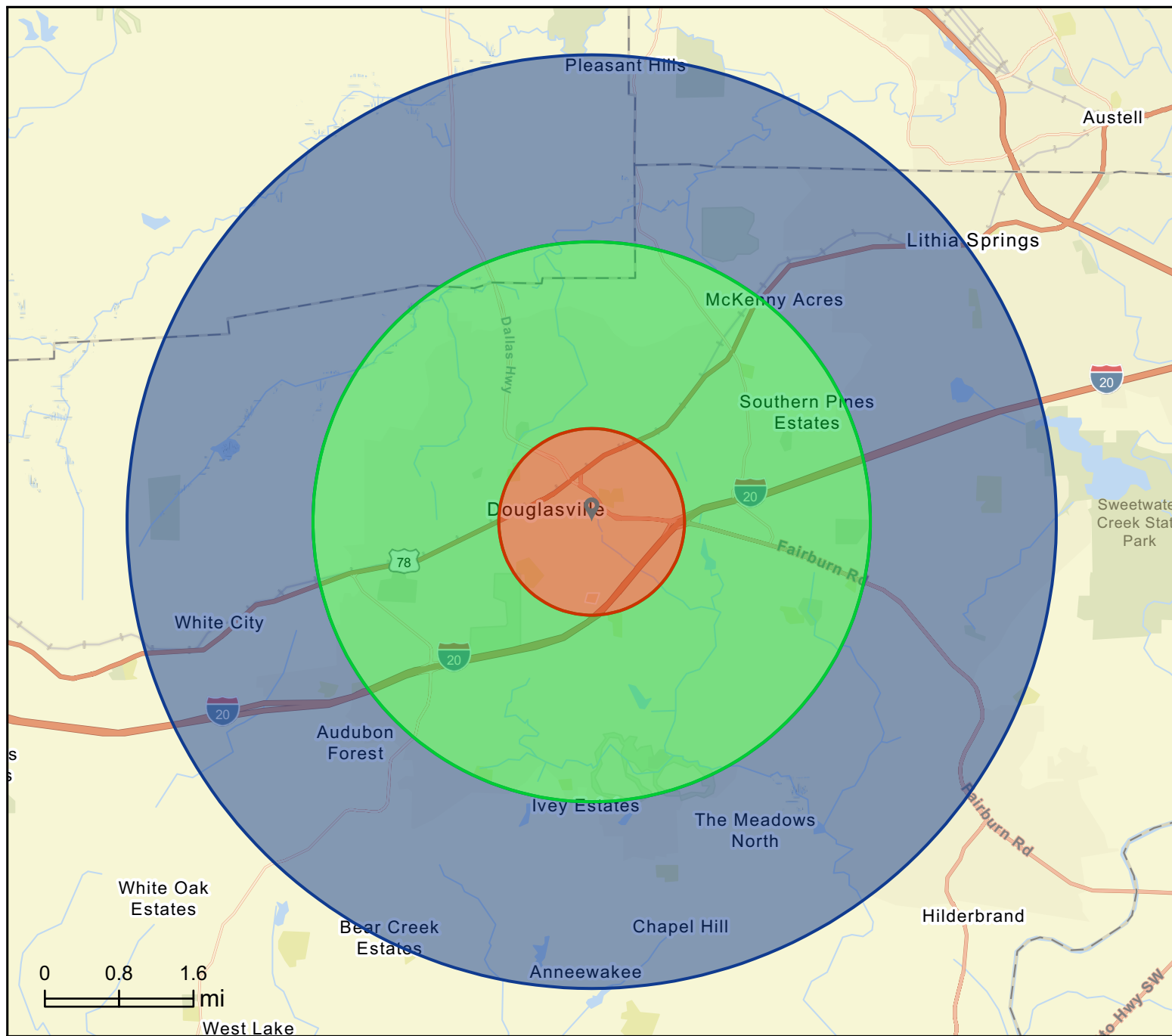


Site Map

Douglas Commons
8471 Hospital Dr, Douglasville, Georgia, 30134
Ring bands: 0-1, 1-3, 3-5 mile radii

Prepared by Esri
Latitude: 33.75067
Longitude: -84.73214



Market Profile

Douglas Commons
 8471 Hospital Dr, Douglasville, Georgia, 30134
 Ring bands: 0-1, 1-3, 3-5 mile radii

Prepared by Esri
 Latitude: 33.75067
 Longitude: -84.73214

	0 - 1 mile	1 - 3 mile	3 - 5 mile
Population Summary			
2010 Total Population	6,037	30,917	51,017
2020 Total Population	6,248	35,200	53,026
2020 Group Quarters	470	64	44
2025 Total Population	6,196	36,131	54,079
2025 Group Quarters	424	58	41
2030 Total Population	6,154	36,532	54,457
2025-2030 Annual Rate	-0.14%	0.22%	0.14%
2025 Total Daytime Population	11,833	34,727	40,764
Workers	8,519	16,229	12,567
Residents	3,314	18,498	28,197
Household Summary			
2010 Households	2,019	11,186	17,307
2010 Average Household Size	2.61	2.75	2.94
2020 Total Households	2,184	12,716	18,106
2020 Average Household Size	2.65	2.76	2.93
2025 Households	2,235	13,122	18,693
2025 Average Household Size	2.58	2.75	2.89
2030 Households	2,232	13,318	18,942
2030 Average Household Size	2.57	2.74	2.87
2025-2030 Annual Rate	-0.03%	0.30%	0.27%
2010 Families	1,278	8,098	13,334
2010 Average Family Size	3.25	3.22	3.34
2025 Families	1,374	9,071	13,823
2025 Average Family Size	3.35	3.28	3.36
2030 Families	1,361	9,129	13,871
2030 Average Family Size	3.35	3.28	3.35
2025-2030 Annual Rate	-0.19%	0.13%	0.07%
Housing Unit Summary			
2000 Housing Units	2,239	8,730	13,528
Owner Occupied Housing Units	46.4%	68.0%	83.1%
Renter Occupied Housing Units	46.1%	25.9%	13.2%
Vacant Housing Units	7.5%	6.1%	3.7%
2010 Housing Units	2,394	12,415	18,850
Owner Occupied Housing Units	33.0%	59.4%	71.6%
Renter Occupied Housing Units	51.4%	30.7%	20.2%
Vacant Housing Units	15.7%	9.9%	8.2%
2020 Housing Units	2,375	13,471	18,950
Owner Occupied Housing Units	35.9%	58.2%	71.7%
Renter Occupied Housing Units	56.0%	36.2%	23.9%
Vacant Housing Units	8.2%	5.4%	4.5%
2025 Housing Units	2,403	13,792	19,501
Owner Occupied Housing Units	39.9%	61.1%	73.8%
Renter Occupied Housing Units	53.1%	34.0%	22.1%
Vacant Housing Units	7.0%	4.9%	4.1%
2030 Housing Units	2,415	14,062	19,798
Owner Occupied Housing Units	41.4%	62.6%	74.4%
Renter Occupied Housing Units	51.0%	32.1%	21.3%
Vacant Housing Units	7.6%	5.3%	4.3%

Data Note: Household population includes persons not residing in group quarters. Average Household Size is the household population divided by total households. Persons in families include the householder and persons related to the householder by birth, marriage, or adoption. Per Capita Income represents the income received by all persons aged 15 years and over divided by the total population.

Source: Esri forecasts for 2025 and 2030. U.S. Census Bureau 2000 and 2010 decennial Census data converted by Esri into 2020 geography.

August 30, 2025

Market Profile

Douglas Commons
 8471 Hospital Dr, Douglasville, Georgia, 30134
 Ring bands: 0-1, 1-3, 3-5 mile radii

Prepared by Esri
 Latitude: 33.75067
 Longitude: -84.73214

	0 - 1 mile	1 - 3 mile	3 - 5 mile
2025 Households by Income			
Household Income Base	2,235	13,122	18,693
<\$15,000	15.1%	6.7%	5.8%
\$15,000 - \$24,999	13.4%	3.8%	4.2%
\$25,000 - \$34,999	4.7%	4.0%	4.6%
\$35,000 - \$49,999	14.4%	10.1%	10.8%
\$50,000 - \$74,999	18.8%	19.4%	17.0%
\$75,000 - \$99,999	8.9%	15.8%	15.6%
\$100,000 - \$149,999	19.3%	21.3%	22.6%
\$150,000 - \$199,999	2.6%	8.0%	11.2%
\$200,000+	2.9%	10.9%	8.3%
Average Household Income	\$66,387	\$103,564	\$103,396
2030 Households by Income			
Household Income Base	2,232	13,318	18,942
<\$15,000	14.1%	5.9%	5.1%
\$15,000 - \$24,999	11.3%	3.0%	3.3%
\$25,000 - \$34,999	4.1%	3.4%	3.7%
\$35,000 - \$49,999	14.8%	8.7%	9.0%
\$50,000 - \$74,999	18.0%	17.7%	15.8%
\$75,000 - \$99,999	9.7%	15.3%	15.3%
\$100,000 - \$149,999	21.8%	23.3%	24.2%
\$150,000 - \$199,999	3.0%	9.4%	13.1%
\$200,000+	3.1%	13.3%	10.6%
Average Household Income	\$70,706	\$113,575	\$113,599
2025 Owner Occupied Housing Units by Value			
Total	958	8,432	14,384
<\$50,000	8.0%	2.0%	3.2%
\$50,000 - \$99,999	2.7%	0.9%	3.9%
\$100,000 - \$149,999	5.8%	2.0%	6.4%
\$150,000 - \$199,999	13.7%	5.0%	8.9%
\$200,000 - \$249,999	15.4%	14.7%	12.2%
\$250,000 - \$299,999	12.0%	16.5%	13.1%
\$300,000 - \$399,999	20.5%	31.7%	32.1%
\$400,000 - \$499,999	5.5%	15.2%	12.8%
\$500,000 - \$749,999	14.0%	10.5%	5.8%
\$750,000 - \$999,999	2.0%	1.4%	1.2%
\$1,000,000 - \$1,499,999	0.0%	0.2%	0.3%
\$1,500,000 - \$1,999,999	0.1%	0.0%	0.1%
\$2,000,000 +	0.1%	0.0%	0.0%
Average Home Value	\$308,001	\$350,354	\$312,397
2030 Owner Occupied Housing Units by Value			
Total	1,000	8,804	14,720
<\$50,000	5.3%	0.9%	1.9%
\$50,000 - \$99,999	0.8%	0.2%	1.3%
\$100,000 - \$149,999	1.3%	0.3%	2.3%
\$150,000 - \$199,999	2.7%	1.8%	3.4%
\$200,000 - \$249,999	8.6%	7.3%	8.3%
\$250,000 - \$299,999	10.6%	11.7%	12.1%
\$300,000 - \$399,999	33.5%	38.2%	38.0%
\$400,000 - \$499,999	9.2%	20.8%	20.1%
\$500,000 - \$749,999	23.2%	15.9%	9.8%
\$750,000 - \$999,999	4.7%	2.6%	2.1%
\$1,000,000 - \$1,499,999	0.0%	0.4%	0.4%
\$1,500,000 - \$1,999,999	0.1%	0.0%	0.1%
\$2,000,000 +	0.1%	0.0%	0.0%
Average Home Value	\$404,688	\$406,806	\$372,909

Data Note: Income represents the preceding year, expressed in current dollars. Household income includes wage and salary earnings, interest dividends, net rents, pensions, SSI and welfare payments, child support, and alimony.

Source: Esri forecasts for 2025 and 2030. U.S. Census Bureau 2000 and 2010 decennial Census data converted by Esri into 2020 geography.

August 30, 2025

Market Profile

Douglas Commons
 8471 Hospital Dr, Douglasville, Georgia, 30134
 Ring bands: 0-1, 1-3, 3-5 mile radii

Prepared by Esri
 Latitude: 33.75067
 Longitude: -84.73214

	0 - 1 mile	1 - 3 mile	3 - 5 mile
Median Household Income			
2025	\$52,443	\$82,709	\$85,454
2030	\$56,387	\$91,951	\$95,679
Median Home Value			
2025	\$267,391	\$328,175	\$307,134
2030	\$361,940	\$373,062	\$354,243
Per Capita Income			
2025	\$24,541	\$37,330	\$35,828
2030	\$26,267	\$41,124	\$39,596
Median Age			
2010	32.6	34.0	35.4
2020	35.3	36.2	38.5
2025	36.0	37.0	38.9
2030	37.1	37.9	39.2
2020 Population by Age			
Total	6,248	35,200	53,026
0 - 4	6.0%	6.0%	5.4%
5 - 9	7.3%	7.0%	6.4%
10 - 14	7.2%	7.9%	7.6%
15 - 24	13.7%	14.3%	14.5%
25 - 34	15.4%	13.2%	11.8%
35 - 44	14.1%	13.8%	12.9%
45 - 54	12.9%	14.1%	15.4%
55 - 64	10.9%	11.9%	13.5%
65 - 74	7.2%	7.6%	8.3%
75 - 84	4.0%	3.2%	3.5%
85 +	1.4%	0.9%	0.8%
18 +	75.1%	74.3%	75.6%
2025 Population by Age			
Total	6,195	36,131	54,077
0 - 4	5.8%	5.8%	5.3%
5 - 9	5.9%	6.0%	5.6%
10 - 14	7.0%	6.7%	6.3%
15 - 24	15.8%	14.7%	14.0%
25 - 34	14.1%	14.3%	14.3%
35 - 44	13.7%	13.0%	12.1%
45 - 54	13.2%	13.7%	13.7%
55 - 64	10.6%	12.3%	13.9%
65 - 74	8.1%	8.4%	9.4%
75 - 84	4.4%	4.2%	4.5%
85 +	1.4%	1.0%	1.0%
18 +	77.0%	77.2%	78.8%
2030 Population by Age			
Total	6,154	36,532	54,459
0 - 4	5.8%	5.7%	5.3%
5 - 9	5.4%	5.5%	5.3%
10 - 14	5.6%	5.8%	5.6%
15 - 24	15.5%	13.4%	11.9%
25 - 34	14.7%	15.7%	16.3%
35 - 44	13.7%	13.0%	12.6%
45 - 54	13.0%	12.7%	12.1%
55 - 64	10.7%	12.2%	13.5%
65 - 74	8.9%	9.5%	10.7%
75 - 84	4.9%	5.1%	5.4%
85 +	1.7%	1.3%	1.4%
18 +	79.0%	79.3%	80.5%

Source: Esri forecasts for 2025 and 2030. U.S. Census Bureau 2000 and 2010 decennial Census data converted by Esri into 2020 geography.

August 30, 2025

Market Profile

Douglas Commons
 8471 Hospital Dr, Douglasville, Georgia, 30134
 Ring bands: 0-1, 1-3, 3-5 mile radii

Prepared by Esri
 Latitude: 33.75067
 Longitude: -84.73214

	0 - 1 mile	1 - 3 mile	3 - 5 mile
2020 Population by Sex			
Males	2,986	16,382	25,324
Females	3,262	18,818	27,702
2025 Population by Sex			
Males	2,977	17,119	26,108
Females	3,219	19,012	27,971
2030 Population by Sex			
Males	2,950	17,328	26,178
Females	3,203	19,204	28,279
2010 Population by Race/Ethnicity			
Total	6,037	30,916	51,017
White Alone	43.7%	44.9%	55.9%
Black Alone	48.2%	46.7%	35.6%
American Indian Alone	0.3%	0.3%	0.3%
Asian Alone	0.8%	1.6%	1.4%
Pacific Islander Alone	0.0%	0.1%	0.1%
Some Other Race Alone	3.6%	3.9%	4.1%
Two or More Races	3.2%	2.4%	2.5%
Hispanic Origin	8.0%	8.3%	9.0%
Diversity Index	63.6	64.2	63.0
2020 Population by Race/Ethnicity			
Total	6,248	35,200	53,026
White Alone	29.0%	27.2%	39.5%
Black Alone	55.8%	57.3%	44.2%
American Indian Alone	0.4%	0.5%	0.5%
Asian Alone	1.1%	1.8%	1.6%
Pacific Islander Alone	0.2%	0.1%	0.1%
Some Other Race Alone	6.5%	5.8%	6.6%
Two or More Races	6.9%	7.3%	7.6%
Hispanic Origin	11.1%	11.2%	12.5%
Diversity Index	67.5	67.0	71.7
2025 Population by Race/Ethnicity			
Total	6,195	36,131	54,080
White Alone	23.7%	22.4%	33.4%
Black Alone	59.7%	60.9%	48.3%
American Indian Alone	0.5%	0.5%	0.6%
Asian Alone	1.0%	1.8%	1.6%
Pacific Islander Alone	0.3%	0.1%	0.1%
Some Other Race Alone	7.4%	6.4%	7.7%
Two or More Races	7.5%	7.9%	8.4%
Hispanic Origin	12.7%	12.7%	14.5%
Diversity Index	67.1	66.4	73.1
2030 Population by Race/Ethnicity			
Total	6,153	36,533	54,457
White Alone	21.7%	20.5%	30.9%
Black Alone	60.6%	61.7%	49.6%
American Indian Alone	0.5%	0.6%	0.6%
Asian Alone	1.1%	1.9%	1.7%
Pacific Islander Alone	0.3%	0.1%	0.1%
Some Other Race Alone	8.0%	6.9%	8.3%
Two or More Races	7.8%	8.3%	8.9%
Hispanic Origin	13.7%	13.7%	15.7%
Diversity Index	67.4	66.8	73.8

Data Note: Persons of Hispanic Origin may be of any race. The Diversity Index measures the probability that two people from the same area will be from different race/ethnic groups.

Source: Esri forecasts for 2025 and 2030. U.S. Census Bureau 2000 and 2010 decennial Census data converted by Esri into 2020 geography.

August 30, 2025

Market Profile

Douglas Commons
 8471 Hospital Dr, Douglasville, Georgia, 30134
 Ring bands: 0-1, 1-3, 3-5 mile radii

Prepared by Esri
 Latitude: 33.75067
 Longitude: -84.73214

	0 - 1 mile	1 - 3 mile	3 - 5 mile
2020 Population by Relationship and Household Type			
Total	6,248	35,200	53,026
In Households	92.5%	99.8%	99.9%
Householder	36.5%	35.8%	34.2%
Opposite-Sex Spouse	10.4%	14.9%	17.1%
Same-Sex Spouse	0.2%	0.2%	0.2%
Opposite-Sex Unmarried Partner	2.5%	2.2%	1.8%
Same-Sex Unmarried Partner	0.1%	0.1%	0.1%
Biological Child	27.6%	30.4%	29.8%
Adopted Child	0.6%	0.6%	0.7%
Stepchild	1.6%	1.7%	1.7%
Grandchild	3.6%	3.9%	4.3%
Brother or Sister	1.4%	1.7%	1.6%
Parent	1.7%	1.9%	1.8%
Parent-in-law	0.3%	0.3%	0.4%
Son-in-law or Daughter-in-law	0.5%	0.6%	0.6%
Other Relatives	2.1%	2.2%	2.4%
Foster Child	0.1%	0.1%	0.1%
Other Nonrelatives	3.4%	3.0%	2.9%
In Group Quarters	7.5%	0.2%	0.1%
Institutionalized	6.9%	0.1%	0.1%
Noninstitutionalized	0.6%	0.1%	0.0%
2025 Population 25+ by Educational Attainment			
Total	4,064	24,152	37,234
Less than 9th Grade	0.8%	2.1%	2.8%
9th - 12th Grade, No Diploma	9.3%	6.8%	4.8%
High School Graduate	30.3%	27.0%	27.3%
GED/Alternative Credential	11.4%	2.8%	4.9%
Some College, No Degree	17.6%	19.6%	20.2%
Associate Degree	6.7%	7.6%	9.8%
Bachelor's Degree	14.5%	22.1%	18.6%
Graduate/Professional Degree	9.3%	12.0%	11.5%
2025 Population 15+ by Marital Status			
Total	5,039	29,467	44,780
Never Married	50.3%	37.0%	33.0%
Married	30.6%	47.2%	54.6%
Widowed	6.5%	3.5%	3.8%
Divorced	12.6%	12.3%	8.5%
2025 Civilian Population 16+ in Labor Force			
Civilian Population 16+	2,735	18,826	27,836
Population 16+ Employed	96.6%	95.3%	94.3%
Population 16+ Unemployment rate	3.5%	4.7%	5.7%
Population 16-24 Employed	12.2%	11.6%	12.3%
Population 16-24 Unemployment rate	12.5%	17.0%	18.9%
Population 25-54 Employed	66.5%	65.7%	64.0%
Population 25-54 Unemployment rate	1.7%	2.5%	2.8%
Population 55-64 Employed	14.9%	16.6%	18.9%
Population 55-64 Unemployment rate	0.0%	2.1%	4.3%
Population 65+ Employed	6.4%	6.0%	4.8%
Population 65+ Unemployment rate	9.1%	6.8%	9.8%

Source: Esri forecasts for 2025 and 2030. U.S. Census Bureau 2000 and 2010 decennial Census data converted by Esri into 2020 geography.

August 30, 2025

Market Profile

Douglas Commons
 8471 Hospital Dr, Douglasville, Georgia, 30134
 Ring bands: 0-1, 1-3, 3-5 mile radii

Prepared by Esri
 Latitude: 33.75067
 Longitude: -84.73214

	0 - 1 mile	1 - 3 mile	3 - 5 mile
2025 Employed Population 16+ by Industry			
Total	2,641	17,948	26,243
Agriculture/Mining	0.0%	0.0%	0.2%
Construction	8.6%	6.9%	8.4%
Manufacturing	10.2%	10.1%	7.7%
Wholesale Trade	2.3%	2.5%	2.3%
Retail Trade	13.5%	9.4%	13.4%
Transportation/Utilities	6.0%	8.3%	10.3%
Information	0.5%	2.5%	2.1%
Finance/Insurance/Real Estate	13.3%	5.7%	3.4%
Services	40.9%	48.6%	46.8%
Public Administration	4.8%	5.9%	5.4%
2025 Employed Population 16+ by Occupation			
Total	2,644	17,948	26,241
White Collar	60.5%	58.7%	60.3%
Management/Business/Financial	21.5%	17.3%	16.1%
Professional	18.8%	21.8%	21.5%
Sales	11.0%	8.8%	9.2%
Administrative Support	9.1%	10.7%	13.6%
Services	17.9%	14.6%	15.1%
Blue Collar	21.7%	26.6%	24.5%
Farming/Forestry/Fishing	0.0%	0.0%	0.0%
Construction/Extraction	7.2%	4.8%	6.9%
Installation/Maintenance/Repair	1.7%	2.9%	3.3%
Production	5.8%	5.2%	4.7%
Transportation/Material Moving	7.0%	13.8%	9.7%
2020 Households by Type			
Total	2,184	12,716	18,106
Married Couple Households	29.0%	42.0%	50.4%
With Own Children <18	11.9%	16.5%	19.6%
Without Own Children <18	17.2%	25.5%	30.8%
Cohabiting Couple Households	7.8%	6.3%	5.8%
With Own Children <18	3.8%	2.7%	2.4%
Without Own Children <18	4.0%	3.7%	3.4%
Male Householder, No Spouse/Partner	17.9%	16.3%	15.7%
Living Alone	11.5%	10.1%	9.1%
65 Years and over	3.7%	2.3%	2.2%
With Own Children <18	1.7%	1.8%	1.8%
Without Own Children <18, With Relatives	3.1%	3.3%	3.6%
No Relatives Present	1.6%	1.1%	1.2%
Female Householder, No Spouse/Partner	45.2%	35.4%	28.1%
Living Alone	18.6%	14.0%	10.5%
65 Years and over	8.5%	5.0%	4.6%
With Own Children <18	12.6%	10.2%	7.1%
Without Own Children <18, With Relatives	12.4%	10.2%	9.6%
No Relatives Present	1.7%	1.0%	0.8%
2020 Households by Size			
Total	2,184	12,716	18,106
1 Person Household	30.1%	24.0%	19.6%
2 Person Household	29.0%	30.1%	29.3%
3 Person Household	17.3%	17.1%	19.1%
4 Person Household	10.6%	14.6%	16.4%
5 Person Household	7.6%	8.0%	8.7%
6 Person Household	3.1%	3.6%	4.1%
7 + Person Household	2.2%	2.6%	2.8%

Source: Esri forecasts for 2025 and 2030. U.S. Census Bureau 2000 and 2010 decennial Census data converted by Esri into 2020 geography.

August 30, 2025

Market Profile

Douglas Commons
 8471 Hospital Dr, Douglasville, Georgia, 30134
 Ring bands: 0-1, 1-3, 3-5 mile radii

Prepared by Esri
 Latitude: 33.75067
 Longitude: -84.73214

	0 - 1 mile	1 - 3 mile	3 - 5 mile
2020 Households by Tenure and Mortgage Status			
Total	2,184	12,716	18,106
Owner Occupied	39.1%	61.7%	75.0%
Owned with a Mortgage/Loan	27.0%	50.0%	58.8%
Owned Free and Clear	12.0%	11.7%	16.2%
Renter Occupied	60.9%	38.3%	25.0%
2025 Affordability, Mortgage and Wealth			
Housing Affordability Index	73	93	102
Percent of Income for Mortgage	31.9%	24.8%	22.5%
Wealth Index	39	86	83
2020 Housing Units By Urban/ Rural Status			
Total	2,375	13,471	18,950
Urban Housing Units	100.0%	99.0%	95.9%
Rural Housing Units	0.0%	1.0%	4.1%
2020 Population By Urban/ Rural Status			
Total	6,248	35,200	53,026
Urban Population	100.0%	98.8%	95.9%
Rural Population	0.0%	1.2%	4.1%

Data Note: Households with children include any households with people under age 18, related or not. Multigenerational households are families with 3 or more parent-child relationships. Unmarried partner households are usually classified as nonfamily households unless there is another member of the household related to the householder. Multigenerational and unmarried partner households are reported only to the tract level. Esri estimated block group data, which is used to estimate polygons or non-standard geography.

Source: Esri forecasts for 2025 and 2030. U.S. Census Bureau 2000 and 2010 decennial Census data converted by Esri into 2020 geography.

August 30, 2025

Market Profile

Douglas Commons
 8471 Hospital Dr, Douglasville, Georgia, 30134
 Ring bands: 0-1, 1-3, 3-5 mile radii

Prepared by Esri
 Latitude: 33.75067
 Longitude: -84.73214

	0 - 1 mile	1 - 3 mile	3 - 5 mile
Top 3 Tapestry Segments			
1.	Kids and Kin (C2)	Up and Coming Families (G2)	Flourishing Families (H1)
2.	Independent Cityscapes (A1)	Metro Fusion (C3)	Up and Coming Families (G2)
3.	Moderate Metros (C6)	Flourishing Families (H1)	Family Bonds (E6)
2025 Consumer Spending			
Apparel & Services: Total \$	\$3,426,520	\$29,900,803	\$41,384,729
Average Spent	\$1,533.12	\$2,278.68	\$2,213.92
Spending Potential Index	63	93	90
Education: Total \$	\$2,316,222	\$19,742,709	\$26,850,046
Average Spent	\$1,036.34	\$1,504.55	\$1,436.37
Spending Potential Index	58	84	81
Entertainment/Recreation: Total \$	\$5,208,141	\$47,736,311	\$68,083,566
Average Spent	\$2,330.26	\$3,637.88	\$3,642.20
Spending Potential Index	57	89	89
Food at Home: Total \$	\$10,378,070	\$89,362,257	\$124,634,134
Average Spent	\$4,643.43	\$6,810.11	\$6,667.42
Spending Potential Index	62	91	90
Food Away from Home: Total \$	\$5,426,568	\$49,456,621	\$69,689,528
Average Spent	\$2,427.99	\$3,768.98	\$3,728.11
Spending Potential Index	59	91	90
Health Care: Total \$	\$10,091,915	\$91,983,600	\$133,249,457
Average Spent	\$4,515.40	\$7,009.88	\$7,128.31
Spending Potential Index	58	91	92
HH Furnishings & Equipment: Total \$	\$3,749,829	\$34,685,573	\$49,717,570
Average Spent	\$1,677.78	\$2,643.31	\$2,659.69
Spending Potential Index	58	91	91
Personal Care Products & Services: Total \$	\$1,407,171	\$12,700,669	\$17,887,147
Average Spent	\$629.61	\$967.89	\$956.89
Spending Potential Index	60	92	91
Shelter: Total \$	\$35,147,074	\$310,621,107	\$431,071,233
Average Spent	\$15,725.76	\$23,671.78	\$23,060.57
Spending Potential Index	59	89	87
Support Payments/Cash Contributions/Gifts in Kind: Total \$	\$3,866,875	\$39,263,920	\$58,932,477
Average Spent	\$1,730.15	\$2,992.22	\$3,152.65
Spending Potential Index	52	91	95
Travel: Total \$	\$4,227,780	\$40,065,359	\$57,782,684
Average Spent	\$1,891.62	\$3,053.30	\$3,091.14
Spending Potential Index	52	85	86
Vehicle Maintenance & Repairs: Total \$	\$1,827,456	\$16,497,061	\$23,237,219
Average Spent	\$817.65	\$1,257.21	\$1,243.10
Spending Potential Index	61	93	92

Data Note: Consumer spending shows the amount spent on a variety of goods and services by households that reside in the area. Expenditures are shown by broad budget categories that are not mutually exclusive. Consumer spending does not equal business revenue. Total and Average Amount Spent Per Household represent annual figures. The Spending Potential Index represents the amount spent in the area relative to a national average of 100.

Source: Consumer Spending data are derived from the 2022 and 2023 Consumer Expenditure Surveys, Bureau of Labor Statistics. Esri.

Source: Esri forecasts for 2025 and 2030. U.S. Census Bureau 2000 and 2010 decennial Census data converted by Esri into 2020 geography.

August 30, 2025