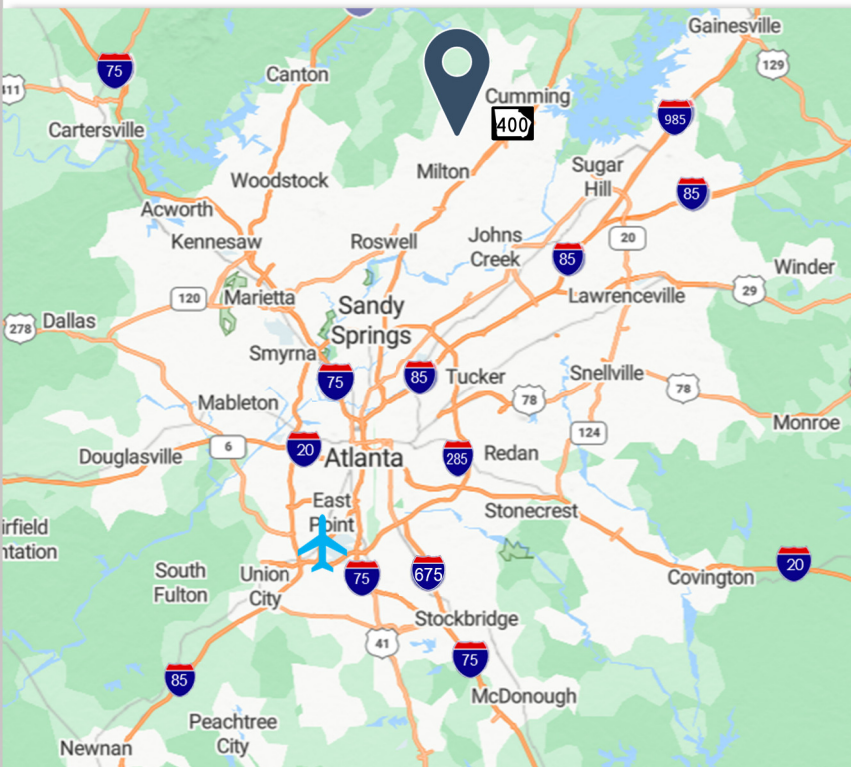


# MIDWAY SHOPPING CENTER



4900-4942 Atlanta Highway | Alpharetta, GA 30004 | Forsyth County

Available Retail



## PROPERTY INFORMATION:

Midway Shopping Center is located at the signalized intersection of Atlanta Highway (Hwy 9) and Post Road, in Forsyth County—one of the fastest-growing and most affluent counties in the Southeast and the top-ranked in Georgia. Hwy 9 is currently being widened from Hembree Road to Bethelview Road, a major infrastructure upgrade designed to expand capacity, reduce commute times, and enhance pedestrian and cyclist safety, significantly improving overall quality of life in the area.

## PROPERTY HIGHLIGHTS:

|              |                                   |
|--------------|-----------------------------------|
| Project GLA: | 79,125 SF                         |
| Available:   | 1,200 ± SF Potential Availability |
| Anchor:      | Publix (51,240 SF)                |
| Type:        | Neighborhood Grocery              |
| Parking:     | 650 ±                             |



COLUMBIA PROPERTIES

RETAIL LEASING  
ADVISORS

Leasing Contact:  
**SHANNON SHUMAN MARTIN**  
404.312.4305

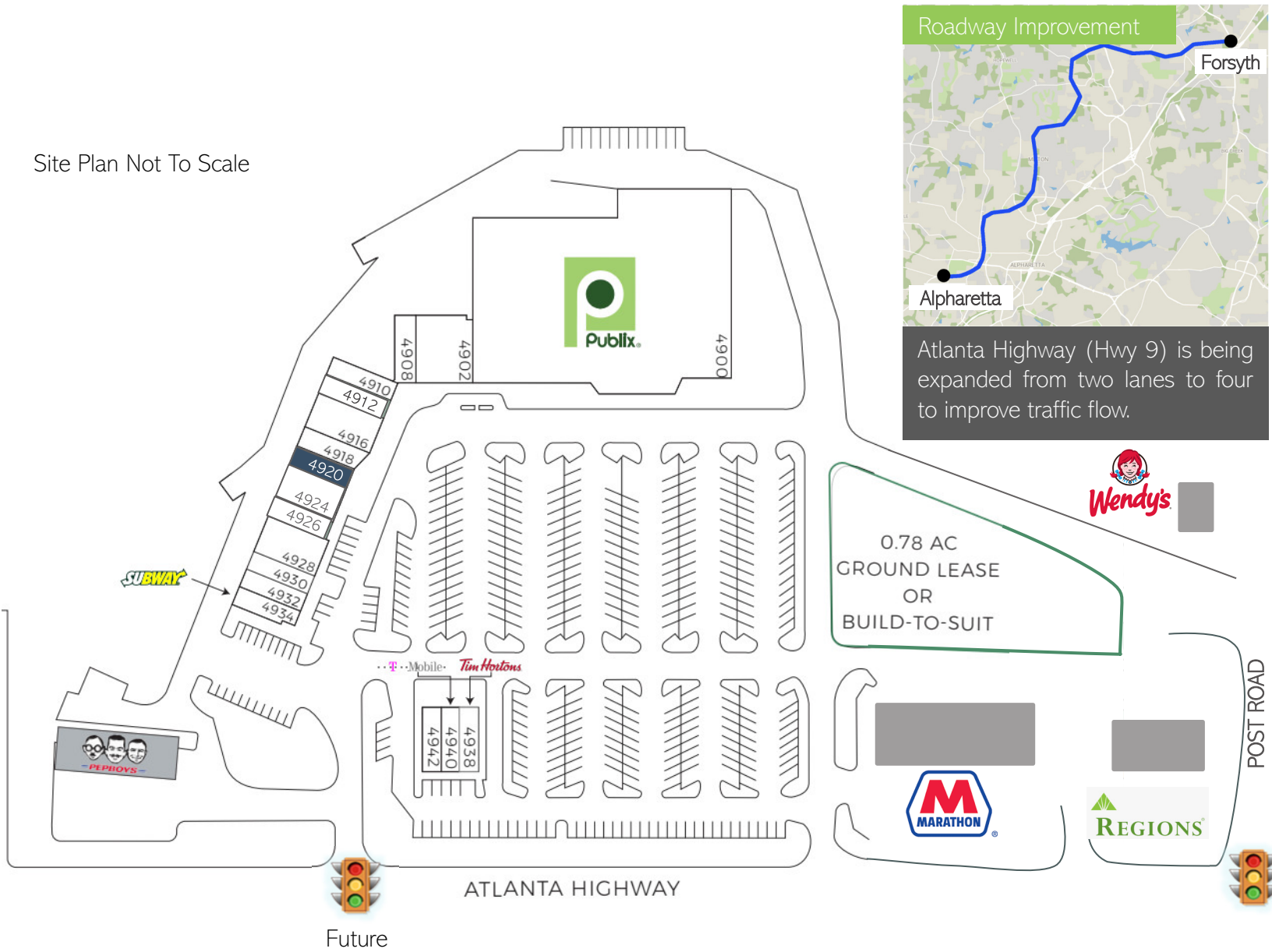
Shannon@RetailLeasingAdvisors.net  
www.RetailLeasingAdvisors.net

MIDWAY SHOPPING CENTER

4900-4942 Atlanta Highway | Alpharetta, GA 30004 | Fulton County



Site Plan Not To Scale



| SUITE | TENANTS                        | SF     |
|-------|--------------------------------|--------|
| 4900  | Publix                         | 51,420 |
| 4902  | El Porton Mexican Restaurant   | 4,175  |
| 4908  | MK Package                     | 1,400  |
| 4910  | I Love NY Pizza                | 1,400  |
| 4912  | Best Brains Learning Centers   | 1,400  |
| 4916  | Karate Atlanta                 | 2,800  |
| 4918  | Pak Mail                       | 1,300  |
| 4920  | POTENTIAL AVAILABILITY         | 1,200  |
| 4924  | Collage Hair Design (3,600 SF) | 2,400  |

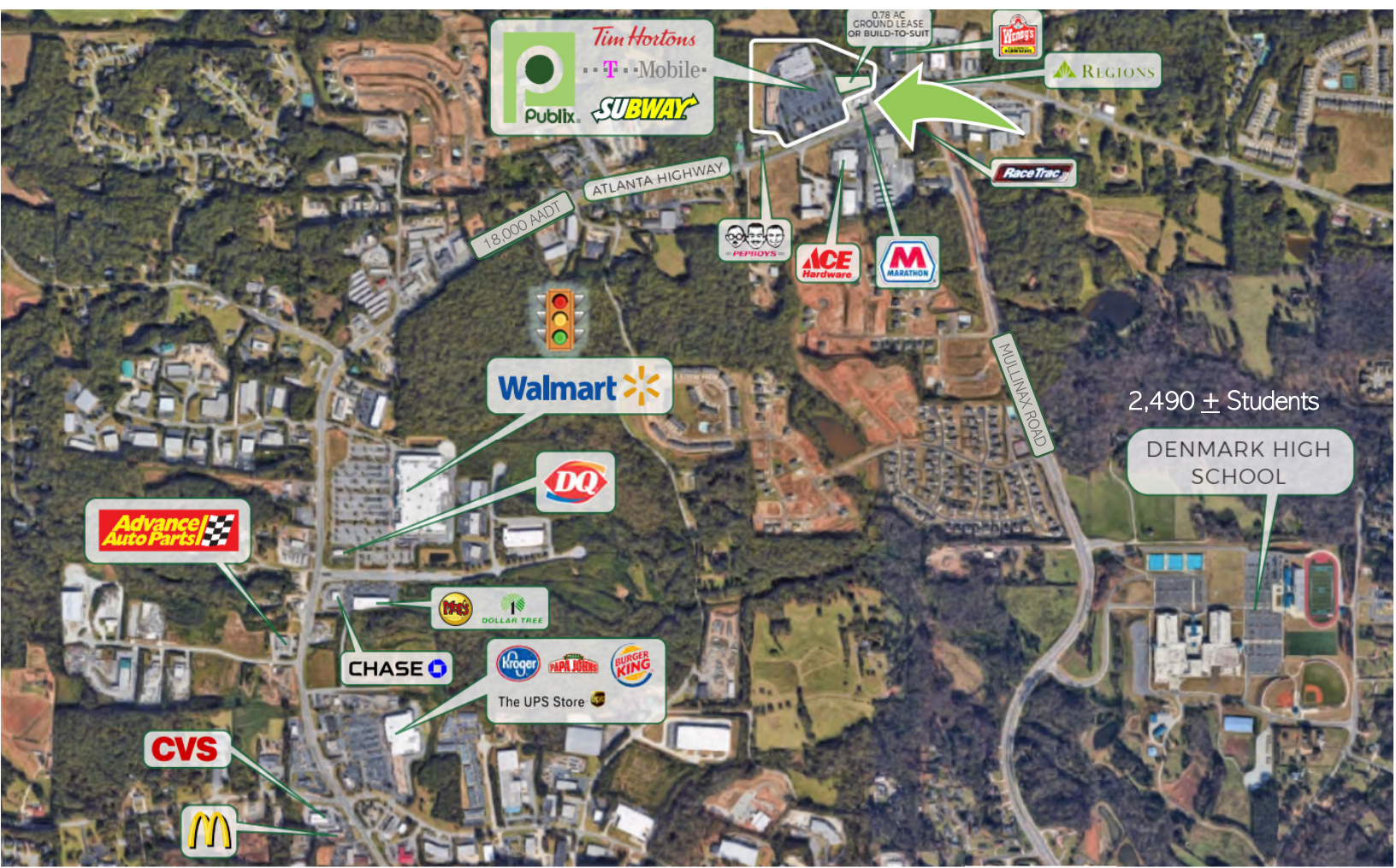
| SUITE        | TENANTS                 | SF    |
|--------------|-------------------------|-------|
| 4926         | GreenDrop (Donations)   | 1,200 |
| 4928         | Midway Family Dentistry | 2,600 |
| 4930         | Nail Dynasty            | 1,300 |
| 4932         | Hibachi Man Japanese    | 1,300 |
| 4934         | Subway                  | 1,300 |
| PAD BUILDING |                         |       |
| 4938         | Tim Horton's            | 1,400 |
| 4940         | T-Mobile                | 1,200 |
| 4942         | Pro Cleaners            | 1,400 |



# MIDWAY SHOPPING CENTER



4900-4942 Atlanta Highway | Alpharetta, GA 30004 | Fulton County



## DEMOGRAPHICS

|                    | 3 Miles   | 5 Miles   |
|--------------------|-----------|-----------|
| Population         | 48,783    | 125,390   |
| Households         | 42,342    | 45,533    |
| Average HH Income  | \$14,008  | \$184,769 |
| Daytime Population | \$210,579 | 134,326   |

## DRIVE TIME

|                    | 10 Min    | 15 Min   |
|--------------------|-----------|----------|
| Population         | 49,360    | 153,648  |
| Households         | 15,739    | 176,944  |
| Average HH Income  | \$203,933 | \$52,944 |
| Daytime Population | 53,988    | 186,133  |

LATITUDE | LONGITUDE  
34.158425 | -84.237966

TRAFFIC COUNTS  
18,000 Atlanta Highway | 13,600 Post Road | 89,700 GA 400

Traffic is currently impacted by road construction

No warranty or representation, express or implied, has been made as to the accuracy of the information provided herein, and no liability is assumed for errors or omissions.



# MIDWAY SHOPPING CENTER

4900-4942 Atlanta Highway | Alpharetta, GA 30004 | Fulton County



Columbia Properties Incorporated has developed more grocery anchored shopping centers than any other developer in Georgia since our inception in 1981. In addition to our development expertise, CPI continues to achieve recognition as one of Atlanta's most successful retail investment, leasing and management firms. We apply the same vigorous analysis and due diligence in providing investment recommendations for our partners and third-party clients as for ourselves. CPI has successfully established and fostered relationships with some of the most prominent grocery and retail tenants in the country.

PROPERTY TEAM:  
[www.ColumbiaPropertiesinc.com](http://www.ColumbiaPropertiesinc.com)



Retail Leasing Advisors is a boutique commercial real estate firm servicing metropolitan Atlanta and Georgia. With over 20 years experience, we specialize in all types of retail and mixed-use developments. We provide very individual attention to our Landlords, Developers and the Communities we serve.

RLA prides itself on being a small firm with the reach and resources of a large firm.

LEASING CONTACT:  
Shannon Shuman Martin  
404.312.4305  
[shannon@retailleasingadvisors.net](mailto:shannon@retailleasingadvisors.net)  
[www.RetailLeasingAdvisors.net](http://www.RetailLeasingAdvisors.net)

