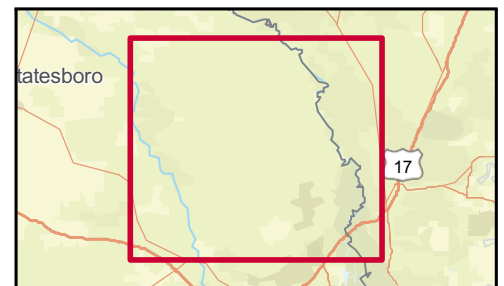
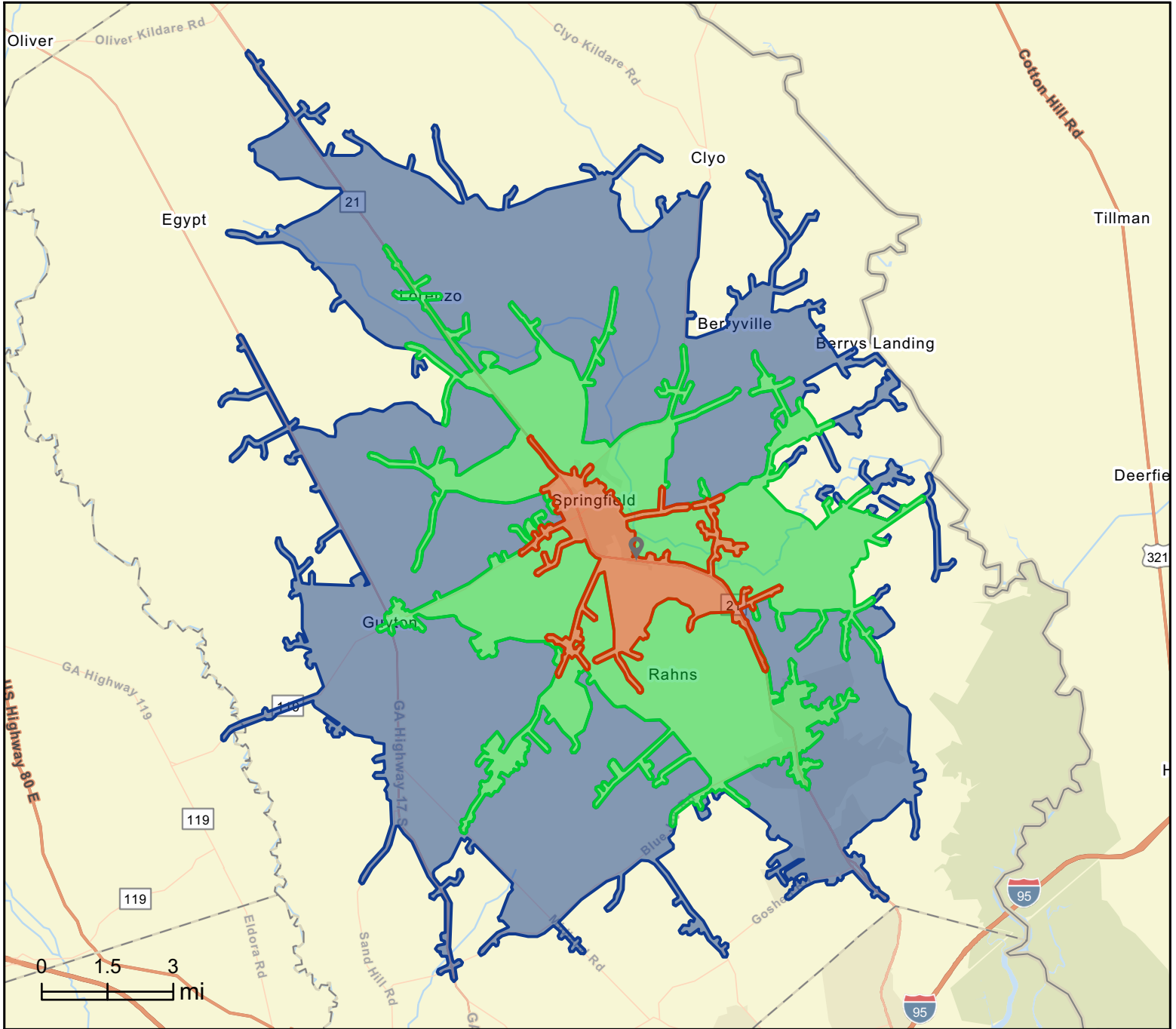


Site Map

1262 GA-21, Springfield, Georgia, 31329
Drive time bands: 0-5, 5-10, 10-15 minute radii

Prepared by Esri
Latitude: 32.35119
Longitude: -81.29656





Market Profile

1262 GA-21, Springfield, Georgia, 31329
 Drive time bands: 0-5, 5-10, 10-15 minute radii

Prepared by Esri
 Latitude: 32.35119
 Longitude: -81.29656

	0 - 5 minute	5 - 10 minute	10 - 15 minute
Population Summary			
2010 Total Population	3,121	9,079	20,618
2020 Total Population	3,245	10,839	25,117
2020 Group Quarters	225	93	6
2024 Total Population	3,688	12,314	27,526
2024 Group Quarters	224	95	6
2029 Total Population	4,124	13,588	30,115
2024-2029 Annual Rate	2.26%	1.99%	1.81%
2024 Total Daytime Population	4,104	9,930	19,245
Workers	2,196	3,485	5,261
Residents	1,908	6,445	13,984
Household Summary			
2010 Households	922	3,039	7,236
2010 Average Household Size	2.90	2.93	2.85
2020 Total Households	1,051	3,658	9,119
2020 Average Household Size	2.87	2.94	2.75
2024 Households	1,216	4,248	10,131
2024 Average Household Size	2.85	2.88	2.72
2029 Households	1,395	4,788	11,302
2029 Average Household Size	2.80	2.82	2.66
2024-2029 Annual Rate	2.78%	2.42%	2.21%
2010 Families	701	2,346	5,580
2010 Average Family Size	3.30	3.32	3.24
2024 Families	878	3,220	7,616
2024 Average Family Size	3.42	3.25	3.20
2029 Families	1,001	3,614	8,460
2029 Average Family Size	3.37	3.20	3.15
2024-2029 Annual Rate	2.66%	2.34%	2.12%
Housing Unit Summary			
2000 Housing Units	842	2,362	5,075
Owner Occupied Housing Units	64.8%	72.7%	74.6%
Renter Occupied Housing Units	23.6%	19.9%	17.8%
Vacant Housing Units	11.5%	7.3%	7.6%
2010 Housing Units	1,027	3,310	7,982
Owner Occupied Housing Units	63.3%	69.1%	66.3%
Renter Occupied Housing Units	26.4%	22.7%	24.3%
Vacant Housing Units	10.2%	8.2%	9.3%
2020 Housing Units	1,150	3,903	9,620
Owner Occupied Housing Units	64.7%	72.3%	69.5%
Renter Occupied Housing Units	26.7%	21.4%	25.3%
Vacant Housing Units	6.3%	6.7%	5.4%
2024 Housing Units	1,314	4,496	10,645
Owner Occupied Housing Units	68.5%	75.5%	71.9%
Renter Occupied Housing Units	24.0%	19.0%	23.3%
Vacant Housing Units	7.5%	5.5%	4.8%
2029 Housing Units	1,500	5,039	11,819
Owner Occupied Housing Units	72.9%	78.9%	75.1%
Renter Occupied Housing Units	20.1%	16.1%	20.5%
Vacant Housing Units	7.0%	5.0%	4.4%

Data Note: Household population includes persons not residing in group quarters. Average Household Size is the household population divided by total households. Persons in families include the householder and persons related to the householder by birth, marriage, or adoption. Per Capita Income represents the income received by all persons aged 15 years and over divided by the total population.

Source: Esri forecasts for 2024 and 2029. U.S. Census Bureau 2000 and 2010 decennial Census data converted by Esri into 2020 geography.



Market Profile

1262 GA-21, Springfield, Georgia, 31329
 Drive time bands: 0-5, 5-10, 10-15 minute radii

Prepared by Esri
 Latitude: 32.35119
 Longitude: -81.29656

	0 - 5 minute	5 - 10 minute	10 - 15 minute
2024 Households by Income			
Household Income Base	1,216	4,248	10,131
<\$15,000	11.1%	5.2%	5.9%
\$15,000 - \$24,999	3.7%	4.5%	5.5%
\$25,000 - \$34,999	11.6%	7.1%	5.8%
\$35,000 - \$49,999	6.3%	5.4%	5.7%
\$50,000 - \$74,999	18.8%	15.3%	12.9%
\$75,000 - \$99,999	15.3%	17.8%	14.7%
\$100,000 - \$149,999	18.7%	22.1%	24.1%
\$150,000 - \$199,999	6.2%	9.2%	15.9%
\$200,000+	8.3%	13.4%	9.5%
Average Household Income	\$95,350	\$118,913	\$114,856
2029 Households by Income			
Household Income Base	1,395	4,788	11,302
<\$15,000	8.9%	4.0%	4.5%
\$15,000 - \$24,999	2.4%	2.9%	3.6%
\$25,000 - \$34,999	7.7%	4.9%	4.2%
\$35,000 - \$49,999	5.6%	4.2%	4.4%
\$50,000 - \$74,999	18.5%	13.9%	11.0%
\$75,000 - \$99,999	15.8%	17.8%	14.5%
\$100,000 - \$149,999	21.7%	24.7%	26.9%
\$150,000 - \$199,999	8.7%	11.8%	19.8%
\$200,000+	10.5%	15.9%	11.1%
Average Household Income	\$113,339	\$137,242	\$132,100
2024 Owner Occupied Housing Units by Value			
Total	900	3,396	7,652
<\$50,000	4.2%	2.7%	3.8%
\$50,000 - \$99,999	5.9%	3.8%	6.5%
\$100,000 - \$149,999	8.9%	7.0%	6.7%
\$150,000 - \$199,999	10.6%	12.2%	12.2%
\$200,000 - \$249,999	16.3%	14.5%	19.1%
\$250,000 - \$299,999	18.7%	16.5%	18.9%
\$300,000 - \$399,999	26.7%	28.7%	20.4%
\$400,000 - \$499,999	6.6%	7.2%	6.2%
\$500,000 - \$749,999	1.4%	6.5%	5.6%
\$750,000 - \$999,999	0.6%	0.6%	0.4%
\$1,000,000 - \$1,499,999	0.2%	0.2%	0.1%
\$1,500,000 - \$1,999,999	0.0%	0.0%	0.0%
\$2,000,000 +	0.0%	0.0%	0.1%
Average Home Value	\$262,639	\$292,683	\$271,518
2029 Owner Occupied Housing Units by Value			
Total	1,093	3,977	8,878
<\$50,000	1.9%	1.1%	1.9%
\$50,000 - \$99,999	1.4%	0.8%	2.3%
\$100,000 - \$149,999	2.1%	1.7%	2.3%
\$150,000 - \$199,999	4.3%	4.8%	6.0%
\$200,000 - \$249,999	11.1%	9.7%	14.2%
\$250,000 - \$299,999	19.4%	16.4%	20.1%
\$300,000 - \$399,999	42.5%	40.3%	30.4%
\$400,000 - \$499,999	11.9%	11.7%	10.5%
\$500,000 - \$749,999	3.6%	12.4%	11.2%
\$750,000 - \$999,999	1.3%	0.9%	0.9%
\$1,000,000 - \$1,499,999	0.5%	0.4%	0.1%
\$1,500,000 - \$1,999,999	0.0%	0.0%	0.0%
\$2,000,000 +	0.0%	0.0%	0.1%
Average Home Value	\$332,708	\$361,120	\$337,542

Data Note: Income represents the preceding year, expressed in current dollars. Household income includes wage and salary earnings, interest dividends, net rents, pensions, SSI and welfare payments, child support, and alimony.

Source: Esri forecasts for 2024 and 2029. U.S. Census Bureau 2000 and 2010 decennial Census data converted by Esri into 2020 geography.

Market Profile

1262 GA-21, Springfield, Georgia, 31329
Drive time bands: 0-5, 5-10, 10-15 minute radii

Prepared by Esri
Latitude: 32.35119
Longitude: -81.29656

	0 - 5 minute	5 - 10 minute	10 - 15 minute
Median Household Income			
2024	\$72,180	\$90,910	\$98,897
2029	\$83,969	\$103,039	\$109,838
Median Home Value			
2024	\$261,012	\$279,270	\$254,437
2029	\$323,118	\$338,670	\$310,556
Per Capita Income			
2024	\$32,676	\$42,040	\$42,045
2029	\$39,865	\$49,476	\$49,336
Median Age			
2010	33.3	33.7	33.6
2020	35.7	35.7	36.3
2024	36.0	36.2	37.1
2029	37.0	37.0	38.0
2020 Population by Age			
Total	3,245	10,839	25,117
0 - 4	7.2%	7.1%	6.2%
5 - 9	6.3%	7.4%	7.8%
10 - 14	7.3%	7.9%	8.6%
15 - 24	13.6%	12.9%	12.8%
25 - 34	14.6%	13.6%	12.6%
35 - 44	13.0%	13.8%	14.4%
45 - 54	11.9%	12.4%	13.2%
55 - 64	11.0%	12.0%	12.5%
65 - 74	8.0%	8.1%	7.7%
75 - 84	4.5%	3.6%	3.2%
85 +	2.5%	1.1%	0.9%
18 +	74.7%	73.0%	72.6%
2024 Population by Age			
Total	3,688	12,315	27,527
0 - 4	7.0%	7.0%	6.1%
5 - 9	7.3%	7.4%	6.7%
10 - 14	6.5%	7.4%	7.9%
15 - 24	13.5%	13.4%	14.0%
25 - 34	14.2%	13.1%	12.3%
35 - 44	13.2%	14.1%	14.4%
45 - 54	11.9%	12.6%	13.1%
55 - 64	10.8%	11.2%	11.9%
65 - 74	8.2%	8.7%	8.6%
75 - 84	4.9%	4.0%	3.9%
85 +	2.3%	1.1%	1.0%
18 +	75.0%	73.8%	74.5%
2029 Population by Age			
Total	4,126	13,590	30,115
0 - 4	6.9%	6.9%	6.1%
5 - 9	6.8%	6.8%	6.1%
10 - 14	7.0%	7.1%	6.5%
15 - 24	12.2%	12.8%	13.6%
25 - 34	14.2%	13.5%	13.6%
35 - 44	13.8%	13.9%	13.6%
45 - 54	11.9%	12.4%	13.0%
55 - 64	10.7%	10.9%	11.6%
65 - 74	9.1%	9.3%	9.8%
75 - 84	5.3%	4.9%	4.7%
85 +	2.1%	1.3%	1.2%
18 +	75.8%	75.2%	77.1%

Source: Esri forecasts for 2024 and 2029. U.S. Census Bureau 2000 and 2010 decennial Census data converted by Esri into 2020 geography.

Market Profile

1262 GA-21, Springfield, Georgia, 31329
Drive time bands: 0-5, 5-10, 10-15 minute radii

Prepared by Esri
Latitude: 32.35119
Longitude: -81.29656

	0 - 5 minute	5 - 10 minute	10 - 15 minute
2020 Population by Sex			
Males	1,632	5,419	12,305
Females	1,613	5,420	12,812
2024 Population by Sex			
Males	1,878	6,248	13,700
Females	1,810	6,066	13,826
2029 Population by Sex			
Males	2,088	6,844	14,887
Females	2,036	6,744	15,228
2010 Population by Race/Ethnicity			
Total	3,121	9,079	20,617
White Alone	71.6%	77.4%	80.5%
Black Alone	24.9%	18.8%	14.8%
American Indian Alone	0.5%	0.3%	0.3%
Asian Alone	0.3%	0.5%	1.2%
Pacific Islander Alone	0.1%	0.1%	0.0%
Some Other Race Alone	1.0%	1.1%	0.9%
Two or More Races	1.7%	1.8%	2.2%
Hispanic Origin	2.9%	3.4%	3.4%
Diversity Index	45.7	40.6	37.3
2020 Population by Race/Ethnicity			
Total	3,245	10,839	25,117
White Alone	71.2%	72.3%	73.4%
Black Alone	20.2%	17.3%	15.6%
American Indian Alone	0.4%	0.4%	0.4%
Asian Alone	0.4%	0.5%	1.5%
Pacific Islander Alone	0.1%	0.1%	0.1%
Some Other Race Alone	2.5%	2.2%	2.1%
Two or More Races	5.4%	7.2%	6.9%
Hispanic Origin	5.4%	5.5%	5.5%
Diversity Index	50.6	49.9	49.0
2024 Population by Race/Ethnicity			
Total	3,687	12,315	27,525
White Alone	68.2%	70.1%	70.9%
Black Alone	22.0%	18.6%	17.1%
American Indian Alone	0.4%	0.4%	0.4%
Asian Alone	0.4%	0.5%	1.6%
Pacific Islander Alone	0.1%	0.1%	0.1%
Some Other Race Alone	3.1%	2.6%	2.5%
Two or More Races	5.8%	7.8%	7.4%
Hispanic Origin	6.9%	6.9%	6.9%
Diversity Index	54.9	53.6	53.1
2029 Population by Race/Ethnicity			
Total	4,125	13,589	30,116
White Alone	66.3%	68.3%	69.2%
Black Alone	23.1%	19.4%	17.8%
American Indian Alone	0.4%	0.4%	0.4%
Asian Alone	0.4%	0.6%	1.7%
Pacific Islander Alone	0.2%	0.1%	0.1%
Some Other Race Alone	3.4%	2.9%	2.7%
Two or More Races	6.3%	8.4%	8.0%
Hispanic Origin	7.7%	7.6%	7.6%
Diversity Index	57.2	55.9	55.5

Data Note: Persons of Hispanic Origin may be of any race. The Diversity Index measures the probability that two people from the same area will be from different race/ethnic groups.

Source: Esri forecasts for 2024 and 2029. U.S. Census Bureau 2000 and 2010 decennial Census data converted by Esri into 2020 geography.

	0 - 5 minute	5 - 10 minute	10 - 15 minute
2020 Population by Relationship and Household Type			
Total	3,245	10,839	25,117
In Households	93.1%	99.1%	100.0%
Householder	33.8%	35.0%	36.1%
Opposite-Sex Spouse	17.1%	19.2%	19.9%
Same-Sex Spouse	0.1%	0.1%	0.1%
Opposite-Sex Unmarried Partner	2.1%	2.3%	2.2%
Same-Sex Unmarried Partner	0.1%	0.1%	0.1%
Biological Child	26.9%	29.3%	30.1%
Adopted Child	0.6%	0.7%	0.8%
Stepchild	2.1%	2.1%	2.2%
Grandchild	3.4%	3.4%	2.7%
Brother or Sister	0.9%	0.9%	0.8%
Parent	1.1%	1.1%	1.0%
Parent-in-law	0.3%	0.4%	0.3%
Son-in-law or Daughter-in-law	0.4%	0.5%	0.4%
Other Relatives	1.5%	1.7%	1.2%
Foster Child	0.2%	0.1%	0.1%
Other Nonrelatives	2.5%	2.3%	2.0%
In Group Quarters	6.9%	0.9%	0.0%
Institutionalized	6.8%	0.8%	0.0%
Noninstitutionalized	0.2%	0.1%	0.0%
2024 Population 25+ by Educational Attainment			
Total	2,420	7,982	17,949
Less than 9th Grade	1.8%	1.0%	2.0%
9th - 12th Grade, No Diploma	6.0%	7.3%	6.4%
High School Graduate	33.1%	30.2%	27.6%
GED/Alternative Credential	10.2%	6.7%	5.9%
Some College, No Degree	15.3%	22.7%	19.0%
Associate Degree	11.5%	10.0%	11.6%
Bachelor's Degree	11.9%	14.1%	19.7%
Graduate/Professional Degree	10.3%	8.0%	7.8%
2024 Population 15+ by Marital Status			
Total	2,917	9,630	21,816
Never Married	34.2%	29.7%	26.6%
Married	51.6%	58.4%	58.7%
Widowed	5.0%	3.1%	5.0%
Divorced	9.2%	8.7%	9.7%
2024 Civilian Population 16+ in Labor Force			
Civilian Population 16+	1,747	6,096	14,175
Population 16+ Employed	98.5%	97.2%	95.7%
Population 16+ Unemployment rate	1.5%	2.8%	4.3%
Population 16-24 Employed	13.2%	13.8%	15.2%
Population 16-24 Unemployment rate	0.0%	5.2%	10.0%
Population 25-54 Employed	66.7%	66.4%	65.7%
Population 25-54 Unemployment rate	2.2%	2.7%	3.3%
Population 55-64 Employed	15.8%	15.3%	15.0%
Population 55-64 Unemployment rate	0.0%	2.0%	3.5%
Population 65+ Employed	4.4%	4.5%	4.1%
Population 65+ Unemployment rate	0.0%	0.0%	0.0%

Market Profile

1262 GA-21, Springfield, Georgia, 31329
Drive time bands: 0-5, 5-10, 10-15 minute radii

Prepared by Esri
Latitude: 32.35119
Longitude: -81.29656

	0 - 5 minute	5 - 10 minute	10 - 15 minute
2024 Employed Population 16+ by Industry			
Total	1,720	5,923	13,572
Agriculture/Mining	1.0%	0.8%	0.6%
Construction	7.4%	6.4%	7.9%
Manufacturing	10.8%	12.6%	19.7%
Wholesale Trade	1.9%	1.7%	1.3%
Retail Trade	9.7%	11.7%	9.1%
Transportation/Utilities	13.5%	12.0%	12.3%
Information	0.1%	1.0%	0.9%
Finance/Insurance/Real Estate	4.1%	5.1%	4.4%
Services	44.7%	42.6%	36.6%
Public Administration	6.7%	6.3%	7.1%
2024 Employed Population 16+ by Occupation			
Total	1,719	5,923	13,570
White Collar	50.1%	57.2%	53.6%
Management/Business/Financial	11.0%	15.8%	13.6%
Professional	21.3%	21.3%	21.3%
Sales	7.8%	9.5%	7.9%
Administrative Support	9.9%	10.6%	10.9%
Services	16.5%	13.3%	14.2%
Blue Collar	33.4%	29.4%	32.2%
Farming/Forestry/Fishing	0.3%	0.1%	0.1%
Construction/Extraction	4.5%	3.3%	5.0%
Installation/Maintenance/Repair	9.8%	10.8%	7.4%
Production	6.2%	5.3%	7.0%
Transportation/Material Moving	12.6%	10.0%	12.8%
2020 Households by Type			
Total	1,051	3,658	9,119
Married Couple Households	51.2%	55.8%	55.3%
With Own Children <18	21.6%	25.0%	24.9%
Without Own Children <18	29.6%	30.9%	30.5%
Cohabiting Couple Households	6.7%	6.6%	6.5%
With Own Children <18	3.3%	3.1%	2.9%
Without Own Children <18	3.4%	3.4%	3.6%
Male Householder, No Spouse/Partner	17.0%	16.3%	14.7%
Living Alone	10.8%	10.0%	9.1%
65 Years and over	3.7%	2.7%	2.5%
With Own Children <18	1.9%	2.3%	2.1%
Without Own Children <18, With Relatives	3.3%	3.0%	2.7%
No Relatives Present	1.0%	1.0%	0.8%
Female Householder, No Spouse/Partner	25.0%	21.3%	23.4%
Living Alone	11.1%	8.7%	10.2%
65 Years and over	6.8%	4.5%	5.0%
With Own Children <18	6.5%	5.4%	6.5%
Without Own Children <18, With Relatives	6.5%	6.5%	6.2%
No Relatives Present	1.0%	0.7%	0.5%
2020 Households by Size			
Total	1,051	3,658	9,119
1 Person Household	22.0%	18.7%	19.3%
2 Person Household	30.5%	31.5%	31.2%
3 Person Household	17.2%	19.2%	20.2%
4 Person Household	15.5%	16.2%	16.1%
5 Person Household	8.0%	8.8%	8.4%
6 Person Household	3.7%	3.3%	2.9%
7 + Person Household	3.0%	2.3%	1.9%

Source: Esri forecasts for 2024 and 2029. U.S. Census Bureau 2000 and 2010 decennial Census data converted by Esri into 2020 geography.



Market Profile

1262 GA-21, Springfield, Georgia, 31329
 Drive time bands: 0-5, 5-10, 10-15 minute radii

Prepared by Esri
 Latitude: 32.35119
 Longitude: -81.29656

	0 - 5 minute	5 - 10 minute	10 - 15 minute
2020 Households by Tenure and Mortgage Status			
Total	1,051	3,658	9,119
Owner Occupied	70.8%	77.1%	73.3%
Owned with a Mortgage/Loan	51.1%	57.3%	56.7%
Owned Free and Clear	19.7%	19.8%	16.6%
Renter Occupied	29.2%	22.9%	26.7%
2024 Affordability, Mortgage and Wealth			
Housing Affordability Index	107	126	151
Percent of Income for Mortgage	22.6%	19.2%	16.1%
Wealth Index	79	110	97
2020 Housing Units By Urban/ Rural Status			
Total	1,150	3,903	9,620
Urban Housing Units	0.1%	24.7%	44.4%
Rural Housing Units	99.9%	75.3%	55.6%
2020 Population By Urban/ Rural Status			
Total	3,245	10,839	25,117
Urban Population	0.1%	24.0%	43.1%
Rural Population	99.9%	76.0%	56.9%

Data Note: Households with children include any households with people under age 18, related or not. Multigenerational households are families with 3 or more parent-child relationships. Unmarried partner households are usually classified as nonfamily households unless there is another member of the household related to the householder. Multigenerational and unmarried partner households are reported only to the tract level. Esri estimated block group data, which is used to estimate polygons or non-standard geography.

Source: Esri forecasts for 2024 and 2029. U.S. Census Bureau 2000 and 2010 decennial Census data converted by Esri into 2020 geography.

Market Profile

1262 GA-21, Springfield, Georgia, 31329
Drive time bands: 0-5, 5-10, 10-15 minute radii

Prepared by Esri
Latitude: 32.35119
Longitude: -81.29656

	0 - 5 minute	5 - 10 minute	10 - 15 minute
Top 3 Tapestry Segments			
1.	Middleburg (4C)	Middleburg (4C)	Middleburg (4C)
2.	Southern Satellites (10A)	Southern Satellites (10A)	Southern Satellites (10A)
3.	Down the Road (10D)	Down the Road (10D)	Workday Drive (4A)
2024 Consumer Spending			
Apparel & Services: Total \$	\$2,444,489	\$10,734,401	\$24,862,859
Average Spent	\$2,010.27	\$2,526.93	\$2,454.14
Spending Potential Index	84	106	103
Education: Total \$	\$1,470,861	\$6,875,695	\$15,801,042
Average Spent	\$1,209.59	\$1,618.57	\$1,559.67
Spending Potential Index	70	94	90
Entertainment/Recreation: Total \$	\$4,260,430	\$18,382,511	\$42,317,262
Average Spent	\$3,503.64	\$4,327.33	\$4,177.01
Spending Potential Index	86	106	102
Food at Home: Total \$	\$7,833,534	\$32,747,760	\$74,560,530
Average Spent	\$6,442.05	\$7,708.98	\$7,359.64
Spending Potential Index	88	106	101
Food Away from Home: Total \$	\$4,203,786	\$18,184,836	\$41,961,755
Average Spent	\$3,457.06	\$4,280.80	\$4,141.92
Spending Potential Index	89	110	106
Health Care: Total \$	\$8,699,061	\$35,721,993	\$82,161,219
Average Spent	\$7,153.83	\$8,409.13	\$8,109.88
Spending Potential Index	93	109	105
HH Furnishings & Equipment: Total \$	\$3,417,031	\$14,620,687	\$33,573,579
Average Spent	\$2,810.06	\$3,441.78	\$3,313.95
Spending Potential Index	89	109	105
Personal Care Products & Services: Total \$	\$1,002,248	\$4,366,531	\$9,958,677
Average Spent	\$824.22	\$1,027.90	\$982.99
Spending Potential Index	83	103	99
Shelter: Total \$	\$25,953,978	\$115,521,981	\$265,517,650
Average Spent	\$21,343.73	\$27,194.44	\$26,208.43
Spending Potential Index	80	102	98
Support Payments/Cash Contributions/Gifts in Kind: Total \$	\$4,174,241	\$17,280,997	\$39,871,394
Average Spent	\$3,432.76	\$4,068.03	\$3,935.58
Spending Potential Index	98	116	112
Travel: Total \$	\$2,957,799	\$13,236,893	\$30,446,166
Average Spent	\$2,432.40	\$3,116.03	\$3,005.25
Spending Potential Index	80	103	99
Vehicle Maintenance & Repairs: Total \$	\$1,637,644	\$6,873,685	\$15,760,694
Average Spent	\$1,346.75	\$1,618.10	\$1,555.69
Spending Potential Index	91	109	105

Data Note: Consumer spending shows the amount spent on a variety of goods and services by households that reside in the area. Expenditures are shown by broad budget categories that are not mutually exclusive. Consumer spending does not equal business revenue. Total and Average Amount Spent Per Household represent annual figures. The Spending Potential Index represents the amount spent in the area relative to a national average of 100.

Source: Consumer Spending data are derived from the 2019 and 2020 Consumer Expenditure Surveys, Bureau of Labor Statistics. Esri.

Source: Esri forecasts for 2024 and 2029. U.S. Census Bureau 2000 and 2010 decennial Census data converted by Esri into 2020 geography.